



SEED TENDER PRODUCT CATALOG

701-361-4790
NorthStar-Ag.com

TABLE OF CONTENTS

| | |
|------------|----------------------------|
| 1-7 | J&M - LC SERIES |
| 3 | LC SERIES SEED TENDER |
| 5 | SEED TENDER DIMENSIONS |
| 7 | SEED TENDER SPECIFICATIONS |

| | |
|-------------|----------------------|
| 8-13 | MERIDIAN |
| 8 | 240RT SEED EXPRESS |
| 9 | 375RT SEED EXPRESS |
| 10 | SEED TENDER FEATURES |

| | |
|--------------|----------------------------|
| 14-20 | UNVERFERTH |
| 14 | BULK SEED HANDLING |
| 15 | SEED RUNNER CONVEYOR |
| 16 | SEED RUNNER TANK |
| 17 | SEED RUNNER UNDERCARRIAGE |
| 18 | SEED RUNNER ACCESSORIES |
| 20 | SEED RUNNER SPECIFICATIONS |

THEIR UPGRADES, OUR STANDARDS

LCseries



The SpeedTender Seed Delivery System by J&M has become the best seed tender on the market by helping farmers increase their planting efficiency. The extra-long conveyor can quickly and gently dispense seed to the widest and tallest planters, then rotate 180 degrees for easy self-filling. A patented V-Belt and skirting design keeps the belt centered, reducing seed damage and the chance of premature wear due to misalignment. The larger tank opening makes it easy to completely refill, while keeping the center of gravity low for greater stability. The LC 290, 390, and 535 tenders all have LED work lights on the tank and conveyor for night time unloading. Optional scales and luxury controls allow you to customize the tender to fit your precise planting operation, saving time, and money.

LC SERIES SPEEDTENDERS™

The redesigned tank and patented support arm result in a larger capacity tank with lower overall height. This allows you to carry more seed with a lower center of gravity while also making it easier to fill and more stable over uneven terrain.

The longer conveyor with large diameter round tube belt design makes it easy to reach the tallest central fill and widest box row planters. Our patented Tru-Trak with V-Belt conveyor is designed to reduce seed damage and premature wear on the conveyor belt due to misalignment.

J&M SpeedTenders make your planting season EFFICIENT AND EASY.

LC - LARGER CAPACITY

The LC SpeedTender's™ larger capacity allows you to transport more seed and keeps you on the go during the busy planting season.

LC - LUXURY CONTROLS

A. Standard All-Function Remote

- Starts/Stops Conveyor
- Raises/Lowers Conveyor
- Opens/Closes Tank Doors
- Hydraulically Swings Conveyor



B. Optional Deluxe Wireless Remote

- Starts/Stops Conveyor
- Raises/Lowers Conveyor
- Opens/Closes Tank Doors
- Hydraulically Swings Conveyor
- Remote Scale Shut-Off 1
- Remote Auto Dispense 1
- Remote Conveyor Speed Control 2



C. WC3-D SpeedTender Scale & Wireless Control System

- Starts/Stops Conveyor
- Raises/Lowers Conveyor
- Opens/Closes Tank Doors
- Hydraulically Swings Conveyor
- Remote Scale Shut-Off
- Remote Auto Dispense
- Remote Conveyor Speed Control
- Remote Talc Dispense
- Wireless Engine Start/Stop
- Opens/Closes Electric Roll Tarp
- Auto Bin Tracking



¹Must be equipped with Weigh-Tronix scale system.

²Optional conveyor speed control adjustment located on conveyor.

VARIABLE SPEED CONTROL

Available On Both Standard And Upgraded Controls

SEED TENDERS

LC - LOWER CENTER OF GRAVITY

The LC Series has been designed with a lower overall height and a lower center of gravity, making filling easier and transport more stable, especially over uneven terrain.

LC - LONGER CONVEYOR

The X-tra Long Conveyor offers greater reach and height to service the tallest and widest planters. A patented V-Belt and skirting design keeps the belt centered, reducing seed damage and chance of premature wear due to misalignment. The skirting design also reduces the potential of damaging seed and collecting debris. Competitor conveyor designs feature crowned rollers that allow the belt to "walk" back and forth, making it difficult to maintain alignment and prevent premature wear.

NO HASSLE ALIGNMENT



PATENTED SUPPORT ARM DESIGN

The patented design supports the conveyor from the top, providing better balance and making it easier for one person to rotate from the unload to self-fill positions. Supporting the conveyor from the top rather than underneath also allows the tank to be designed with a lower center of gravity for greater stability during transport.



LCseries



OPTIONAL DUAL WHEEL LC 390

An optional tandem axle undercarriage design is available for Model LC 390 and features a heavier torsion axle, wheels, and tires for greater maneuverability and easier towing.



Optional Talc Applicator



Speedtender

ADVANCED SEED DELIVERY

LC290 LC390 LC535

SEED TENDERS DIMENSIONS



| | LC 290 | LC 390 | LC 535 |
|---|--------------------------|-------------------------|-------------------------|
| A | 5'-1" (A-Frame) | 4'-9" (A-Frame) | ----- |
| A | 2'-10" (Gooseneck) | 2'-8" (Gooseneck) | 3'-6" (Gooseneck) |
| B | 1'-6" (min) (A-Frame) | 1'-6" (min) (A-Frame) | ----- |
| B | 2'-7" (min) (Gooseneck) | 2'-7" (min) (Gooseneck) | 2'-9" (min) (Gooseneck) |
| B | 1'-10" (max) (A-Frame) | 1'-10" (max) (A-Frame) | ----- |
| B | 3'-3" (max) (Gooseneck) | 3'-3" (max) (Gooseneck) | 3'-4" (max) (Gooseneck) |
| C | 21'-3" (A-Frame) | 22'-1" (A-Frame) | ----- |
| C | 23'-5" (Gooseneck) | 24'-4" (Gooseneck) | 29'-2" (Gooseneck) |
| D | 9'-3" | 9'-8" | 10'-8" |
| E | 3'-10" | 3'-10" | 4'-0" |
| F | 17'-11" | 17'-11" | 20'-2" |
| G | 8'-6" | 8'-6" | 8'-6" |
| H | 16'-4" (max) | 16'-4" (max) | 17'-0" (max) |
| H | 8'-7" (min) 17'-4" (max) | 8'-7" (min) | 8'-7" (min) |
| I | 17'-4" (max) | 17'-4" (max) | 20'-4" (max) |
| I | 12'-10" (min) | 12'-10" (min) | 16'-2" (min) |
| J | 9'-9" | 10'-2" | 11'-5" |
| K | 11'-0" | 11'-0" | 11'-0" |

| | EC 270 |
|---|-------------------------|
| A | 2'-6" (A-Frame) |
| A | -0'-3" (Gooseneck) |
| B | 1'-6" (min) (A-Frame) |
| B | 2'-5" (min) (Gooseneck) |
| B | 1'-10" (max) (A-Frame) |
| B | 3'-1" (max) (Gooseneck) |
| C | 20'-8" (A-Frame) |
| C | 23'-3" (Gooseneck) |
| D | 9'-4" |
| E | 13'-0" (max) |
| E | 7'-0" (min) |
| F | 15'-0" (max) |
| F | 12'-4" (min) |
| G | 9'-10" |
| H | 9'-5" |

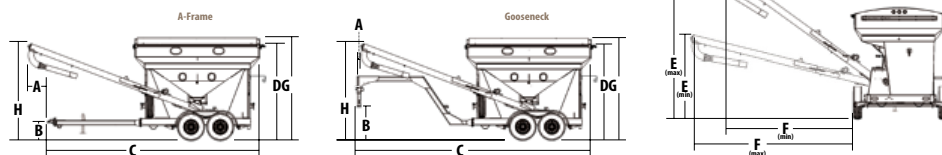
| C4-50 | A-FRAME | GOOSENECK | TRAILER MOUNT |
|-------|--------------|--------------|---------------|
| A | 4'-10" | 2'-10" | 12'-9" |
| B | 1'-6" (min) | 2'-7" (min) | NA |
| B | 1'-10" (max) | 3'-3" (max) | NA |
| C | 20'-4" | 22'-6" | 12'-5" |
| D | 11'-3" | 11'-3" | 10'-8" |
| E | 8'-6" | 8'-6" | 8'-6" |
| F | 14'-2" (max) | 14'-2" (max) | 14'-2" (max) |
| F | 8'-7" (min) | | 8'-7" (min) |
| G | 16'-5" (max) | 16'-5" (max) | 16'-5" (max) |
| G | 13'-7" (min) | 13'-7" (min) | 13'-7" (min) |

| | PRO 251 | PRO 451 |
|---|-----------|-----------|
| A | 16'-4" | 16'-4" |
| B | 21'-3" | 21'-3" |
| C | 4'-111/2" | 4'-111/2" |
| D | 4'-2" | 4'-2" |
| E | 8'-4" | 8'-4" |
| F | 9'-3" | 9'-3" |
| G | 12'-1" | 12'-1" |
| H | 13'-0" | 16'-10" |

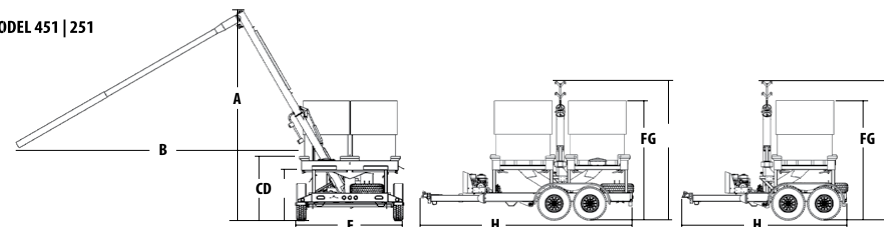
SEED TENDERS DIMENSIONS

LCseries

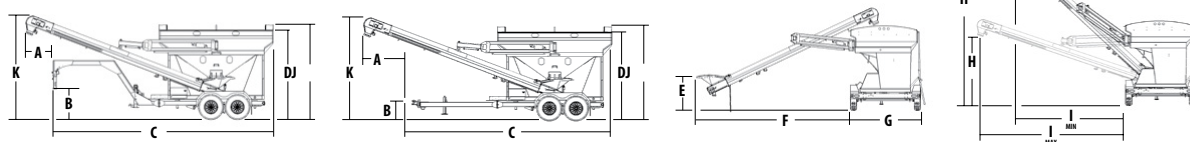
MODEL EC 270



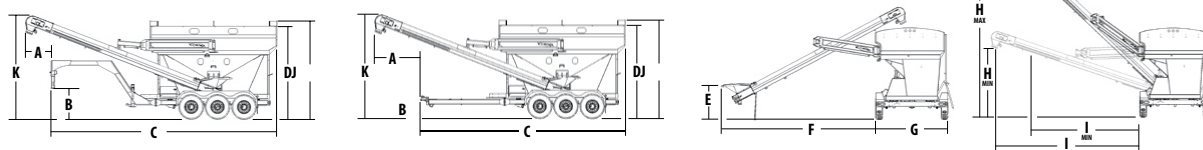
MODEL 451 | 251



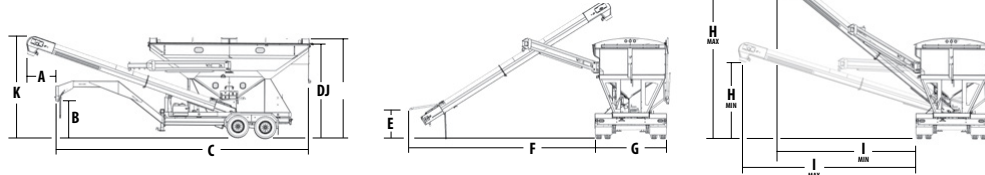
MODEL LC 290



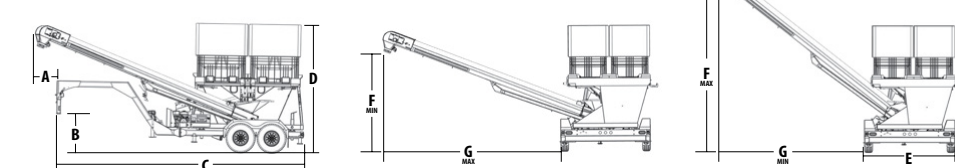
MODEL LC 390



MODEL LC 535



MODEL C4-50



SEED TENDERS SPECIFICATIONS



| | (TOTAL)** | WEIGHT (EMPTY) | TONGUE WT. (LOADED) | CONVEYOR/ AUGER | UNLOADING RATE | CONVEYOR/ AUGER REACH | AXLES | ENGINE |
|--------------------------------------|----------------------------------|-------------------|---|----------------------------------|-------------------|--|--|----------------------------------|
| EC 270 | 270 Cubic Feet | 4,400 lbs. | 1,086 lbs. | 19' Long 7" Diameter | 16 Bushels/Min | 44' (front to rear swing) | Two (2), 7,000 lb. Torsion-Flex Axles w/ Electric Brakes | 4.8 hp Motor w/Electric Start |
| LC 290 | 290 Seed Units 290 Cubic Feet | 6,100 lbs. | 1,650 lbs. 1,207 lbs. (Gooseneck) | 22' Long, 8" Tube Conveyor | 30 Bushels/Min | 49' (front to rear swing) | Two (2), 7,000 lb. Torsion-Flex Axles w/ Electric Brakes | 13 hp Motor w/Electric Start |
| LC 390 LC 390ST-2AS | 390 Seed Units 390 Cubic Feet | 7,500 lbs. | 1,380 lbs. 1,453 lbs. (Gooseneck) | 22' Long, 8" Tube Conveyor | 30 Bushels/Min | 49' (front to rear swing) | Three (3), 7,000 lb. Torsion-Flex Axles w/ Electric Brakes Two (2), 10,000 lb. Axles w/Electric Brakes | 13 hp Motor w/Electric Start |
| LC 535 | 535 Seed Units 535 Cubic Feet | 11,000 lbs. | 4,900 lbs. | 24.5' Long, 10" Tube Conveyor | 45 Bushels/Min | 50' (front to rear swing) (w/telescoping spout) | Two (2), 16,000 lb. Dual Wheel, Spring Ride w/Electric Brakes | 13 hp Motor w/Electric Start |
| PRO C4-50 | Four, 50 Unit Boxes | 6,300 lbs. | 1,650 lbs. | 22' Long, 8" Tube Conveyor | 30 Bushels/Min | 49' (front to rear swing) | Two (2), 7,000 lb. Torsion-Flex Axles w/ Electric Brakes | 13 hp Motor w/Electric Start |
| PRO 251 | Two, 50 Unit Boxes | 2,850 lbs. | 650 lbs. | 16' Spout Height | 4-Minutes per Box | 42' (w/optional 24' spout) | Two (2), 5,200 lb. Torsion-Flex Axles w/ Electric Brakes | 13 hp Motor w/Electric Start |
| PRO 451 | Four, 50 Unit Boxes | 3,786 lbs. | 1,400 lbs. | 16' Spout Height | 4-Minutes per Box | 42' (w/optional 24' spout) | Two (2), 7,000 lb. Torsion-Flex Axles w/Electric Brakes | 13 hp Motor w/Electric Start |



240RT SEED EXPRESS™

BULK SEED TENDER



STANDARD FEATURES:

1. 6" 19' cleated belt hydraulic drive conveyor
2. Up to 1200lb/ per min discharge
3. Hydraulic variable speed conveyor
4. Agri-cover spool tension roll tarp
5. Easy access ladder
6. [2] 120 unit compartments
7. Honda motor
8. Hydraulic swing & raise/lower
9. Hydraulic gates
10. 6 function wireless remote w/ LCD display
11. [2] view glasses
12. Remote engine start/stop
13. High impact powder coat exterior
14. Sample gates US Patent #6396003

OPTIONS:

15. Trailer
16. Talc applicator
17. 10" 2-tier spout
18. 10" flex spout
19. Quick-tach spout
20. Auto-convey™ scale
21. 8" Conveyor (up to 2,500lb/m)



OPTIONAL TRAILER FEATURES:

- Torsion 7K axles on triple axle trailer • Electric brakes • Bolt-on bumper hitch
- 2 5/16" ball hitch coupler • Battery break-away • Wire harness w/ 7-pin connector
- High impact black powder coat finish • L.E.D. lights

| SPECIFICATIONS | 240RT |
|------------------------------|-------------------------|
| Overall Length | 30' 10" |
| Width | 8' 3" |
| Height- floor to top of body | 9' 6" |
| Raised Conveyor Height | 11' 4" |
| Tank Capacity | 240 Units 192 Bushels |



The 240RT features Meridian's advanced five feature control system with hydraulic drive to adjust discharge height, rotate conveyor 180 degrees to the left or right, open/close the gates, start/stop the conveyor or run the conveyor drive system as well as starting/stopping the engine. It is conveniently controlled via a wireless remote.

375RT SEED EXPRESS™

375 UNITS | 297 BUSHEL | 2 COMPARTMENTS



STANDARD FEATURES:

1. 8" 22' cleated belt hydraulic drive conveyor
2. Up to 2500 lb/ per min discharge
3. Hydraulic variable speed conveyor
4. Agri-cover spool tension roll tarp
5. Easy access ladder
6. (2) 188 unit compartments
7. Electric start Honda motor
8. Hydraulic swing & raise/lower
9. Hydraulic gates
10. 6 function wireless remote w/ LCD display
11. High impact powder coat exterior
12. Sample gates US Patent #6396003

OPTIONS:

13. Tri-axle bumper or gooseneck trailer
14. Talc applicator
15. 10" 2-tier spout
16. 10" flex spout
17. Quick-tach spout
18. Auto-Convey™ scale

| SPECIFICATIONS | 240RT |
|------------------------------|-------------------------|
| Overall Length | 30' 10" |
| Width | 8' 3" |
| Height- floor to top of body | 9' 6" |
| Raised Conveyor Height | 11' 4" |
| Tank Capacity | 240 Units 192 Bushels |



REMOTE STANDARD

OPTIONAL TRAILER FEATURES:

- Torsion 7K axles on triple axle trailer • Electric brakes • Bolt-on bumper hitch
- 2 5/16" ball hitch coupler • Battery break-away • Wire harness w/ 7-pin connector
- High impact black powder coat finish • L.E.D. lights



The 375RT features Meridian's advanced five feature control system with hydraulic drive to adjust discharge height, rotate conveyor 180 degrees to the left or right, open/close the gates, start/stop the conveyor or run the conveyor drive system as well as starting/stopping the engine. It is conveniently controlled via a wireless remote.

MERIDIAN TENDER FEATURES



WIRELESS CONTROLS

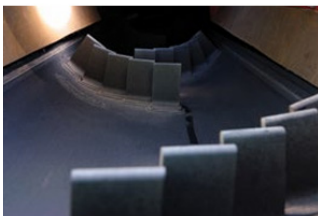
Meridian's wireless remote systems take control to the next level. From a simple wireless optional key FOB for our 112 or 225 to a our robust Mega Remote (standard equipment) for our 240RT & 375RT. This Mega remote allows you to Start / Stop the Engine, Open / Close the gates, Start / Stop / Raise / lower or Swing the conveyor left or right. In addition, the build-in LCD screen provides real-time readout of the product weight while filling or unloading (requires installation of optional Auto-Convey TM scale system).



HIGH IMPACT POWDER COAT TENDER | BLACK PAINT FRAME STANDARD ON ALL TENDERS

Meridian's premium powder coating has a Salt Spray Rating of more than 2,000 hours, 3-4x more than wet paint standards. The superior adhesion and smooth, long-lasting finish of polyester coating ensures that Meridian Seed Tenders will be incredibly durable and will stand the test of time.

Meridian uses industrial black paint on the frame for increased scratch, rock and chip resistance. The paint is also textured for slip resistance.



CLEATED BELT CONVEYOR

Meridian's Cleated Belt Conveyor will move your seed quickly while protecting its integrity. Our belt design features more cleats per inch to deliver a consistent flow, and its staggered design alleviates low pressure suction on belt return. The angled cleats help funnel seed to the center of the discharge.



OPTIONAL TALC APPLICATOR

Meridian's Talc Applicator is available on conveyor style seed tenders. It has the ability to apply talc or graphite to commodities. The internal agitator makes sure that everything flows smoothly.

Available on: Seed Express™ models 240 Basic, 240RT, 375RT, 4055, and Seed Titan™ models 2SE/4SE

- Ability to apply up to 1/2 pound of talc per minute
- Holds up to 20 pounds of talc in a four gallon container
- Internal agitator keeps talc clump free
- Automatically powers on and off when the conveyor is started
- Manual override switch/speed selector

SEED TENDER FEATURES



SEED EXPRESS™ TENDERS

| FEATURE | 112BST | 225RST | 240 BASIC | 240RT | 375RT |
|------------------|---------------------------|--|----------------------------|---|---|
| Compartments | 1 | 2 | 2 | 2 | 2 |
| Total Capacity | 112 Units 88 Bushels | 225 Units 89 Bushels | 240 Units 192 Bushels | 240 Units 192 Bushels | 375 Units 300 Bushels |
| Discharge- STD | 6" Auger | 6" Auger | 6" Tube w/8" belt conveyor | 6" Tube w/8" belt or 8" tube w/ 12" belt Conveyor | 8" tube w/ 12" belt Conveyor |
| Shut Off Gates | Manual | Manual | Manual | Hydraulic | Hydraulic |
| Wireless Control | Optional Key FOB | Optional Key FOB | NA | 6 Function Remote | 6 Function Remote |
| Overall Length | 12' 9" | 15' 3" | 24' 2" | 30' 10" | 39' GN Trailer |
| Width | 8' 2" | 8' 3" | 8' 3" | 8' 4" | 8' 6" |
| Discharge Height | 13' | 15' 6" | 11' 4" | 11' 4" | 13' 7" |
| Unload Capacity | up to 400lb/min | up to 400lb/min | up to 1200lb/min | up to 2500lb/min | up to 2500lb/min |
| OPTIONS | 112BST | 225RST | 240 BASIC | 240RT | 375RT |
| | Trailer, Wireless key fob | Trailer, Electric fold-over lift assembly, scale package, Wireless key fob | Talc applicator | Trailer, Talc applicator Auto-Convey™ scale | Trailer, Talc applicator Auto-Convey™ scale |

SEED TITAN™ BOX TENDERS

| CAPACITY | DISCHARGE | TENDER WITH TRAILER LENGTH | TENDER WITH TRAILER WIDTH | AUGER HEIGHT | AUGER REACH W/O SPOUT | AUGER REACH W/SPOUT COLLAPSED | AUGER REACH W/ SPOUT EXTENDED | TENDER DECK HEIGHT | TENDER TRANSPORT HEIGHT |
|--------------|-----------|----------------------------|---------------------------|--------------|-----------------------|-------------------------------|-------------------------------|--------------------|-------------------------|
| 2 Seed Boxes | 6" Auger | 168" | 78.5" | 14' | 5' | 9' | 17' | 51" | 11' |

| SPECIFICATIONS | 2SE | 4SE |
|---------------------------|---------------------|---------------------|
| Discharge Height | 10' 1" | 11'-11" |
| Width | 7' 5" | 8' 3" |
| Deck Height | 5' 3" | 6' 10" |
| Conveyor Transport Height | 11' 3" | 13' 2" |
| Tank Capacity | 100 Units 2 Boxes | 200 Units 4 Boxes |

SE SERIES 2XT

SEED TENDER FEATURES

SIMPLE AND ACCURATE SEED HANDLING



112BST



225RST



240 BASIC



240RT



375RT



NEW 4055



SEED TENDER FEATURES

SIMPLE AND ACCURATE SEED HANDLING



| FEATURE | 112BST | 225RST | 240 BASIC | 240RT | 375RT | 4055 |
|------------------|---------------------------|---|----------------------------|---|---|---|
| Compartments | 1 | 2 | 2 | 2 | 2 | 2 |
| Total Capacity | 112 Units 88 Bushels | 225 Units 89 Bushels | 240 Units 192 Bushels | 240 Units 192 Bushels | 375 Units 300 Bushels | 405 Units 321 Bushels |
| Discharge- STD | 6" Auger | 6" Auger | 6" Tube w/8" belt conveyor | 6" Tube w/8" belt or 8" tube w/ 12" belt Conveyor | 8" tube w/ 12" belt Conveyor" | 8" tube w/ 12" belt Conveyor" |
| Shut Off Gates | Manual | Manual | Manual | Hydraulic | Hydraulic | Hydraulic |
| Wireless Control | Optional Key FOB | Optional Key FOB | NA | 6 Function Remote | 6 Function Remote | 6 Function Remote |
| Overall Length | "12' 9" | 15' 3" | 24' 2" | 30' 10" | 39' GN Trailer | 30' 8-1/2" |
| Width | 8' 2" | 8' 3" | 8' 3" | 8' 4" | 8' 6" | 8' 6" |
| Discharge Height | 13' | 15'6" | 11'4" | 11' 4" | 13' | 14' 10" |
| Unload Capacity | up to 400lb/min | up to 400lb/min | up to 1200lb/min | up to 2500lb/min | up to 2500lb/min | up to 2500lb/min |
| OPTIONS | 112BST | 225RST | 240 BASIC | 240RT | 375RT | 4055 |
| | Trailer, Wireless key fob | Trailer, Electric fold- over lift assembly, scale package, Wireless key fob | Talc applicator | Trailer, Talc applicator Auto-Convey™ scale | Trailer, Talc applicator Auto-Convey™ scale | Trailer, Talc applicator Auto-Convey™ scale |

Meridian offers a great selection of seed tenders in the seed handling industry and can accommodate any farming operation. We take the work out of loading seed into your planter or drill—decreasing the downtime in the field in order to keep your tractor and planter moving.

MERIDIAN ADVANTAGES:

- **Powder Coat Finish** | Meridian's powder coat finish outlasts liquid paint options
- **Industry Experience** | Meridian pioneered the seed tender in 1989 and continues to innovate the tender industry today
- **Unique Features** | Each Meridian Seed Express Bulk Seed Tender® has accessories and options to



BULK SEED HANDLING

UNVERFERTH



INNOVATION ... REFINED

The original patented self-filling dual-compartment Unverferth® Seed Runner bulk tank tender set new standards for functional design innovation when first introduced in 2006. Unverferth design innovation continues with the 55-Series. Seed Runner tenders for the gentlest seed handling yet, including corn, soybeans, cotton, peanuts and wheat. And they're available in capacities from 500 to 275 seed units to match your operational needs.



GENTLE CONVEYOR BELT DESIGN FOR EASIER, SMOOTHER FILLING

3-WAY VERSATILITY

The **Seed Runner® bulk tank tender** not only allows delivery of seed directly to the planter or drill, but its patented design also allows it to rotate 180° to fill itself. You can also position the conveyor parallel to the tender for transferring seed from one container to another. That's 3-way versatility — loading, unloading, and transferring — for three times the value!



LOW-PROFILE DESIGN FOR EASIER SELF-FILLING

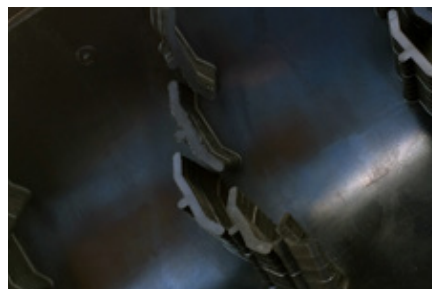


DIRECT TO PLANTER OR DRILL

SEED RUNNER CONVEYOR



ADJUSTABLE ROUNDED DISCHARGE HOOD



CUPPED ROWS OF OFFSET CLEATS



2-STAGE TELESCOPING DOWNSPOUT

- Patented 5-ply rubber belt design with cupped rows of offset cleats for gently carrying seed at up to 40% higher capacity.
- Conveyor lengths of 24' on DXL models, 21' on XL models and 18' on other models.
- Two standard downspouts included — 4' flexible for central-fill planters and drills, 2-stage telescopic for 37' reach on DXL models, 34' reach with XL models and 30' reach on others.
- Rounded discharge chute with rubber lining for gentle seed handling.
- Two standard downspouts included — 4' flexible for central-fill planters and drills, 2-stage telescopic for 37' reach on DXL models, 34' reach with XL models and 30' reach on others
- Rounded discharge chute with rubber lining for gentle seed handling.
- Smooth-start conveyor engagement brings the belt up to maximum speed quickly yet gently for increased belt life, and the electronic flow control allows you to control the conveyor speed independently of the engine.
- Brushes and patented side seals on conveyor inlet minimize damage by preventing seed from backfeeding.
- Models with 10" conveyor quickly unload up to 45 bushels per minute, models with 8" conveyor quickly unload up to 35 bushels per minute and models with 6" conveyor unload up to 16 bushels per minute.
- Up to 90" of hydraulically operated vertical height adjustment for optimum loading/unloading positioning, depending on model.
- Adjustable conveyor spring-lift assist for effortless positioning into self-filling position.

- Top-mounted 6-cubic-inch hydraulic motor pulls the factory-aligned belt forward, keeping it tight for the most efficient and gentle seed movement.
- Conveyors powered by a commercial-duty gas engine with electric start and controls conveniently located on operating side of the unit.
- Master disconnect switch preserves battery life in storage.



STANDARD WIRED REMOTE CONTROL

- Wired remote for easy conveyor on/off, and raise/lower features a magnetic mount for easy storing on your Seed Runner tender.

- Conveyor can be stored facing either the front or the rear of the tender.
- Hopper features over-center locking for easier positioning and canvas cover for keeping intake free of debris.
- Conveyor access panel with tool free removal for easily checking belt tension.
- Hinged, under-hopper cleanout door for complete cleanout
- between varieties.



ACCESS PANEL WITH TOOL-FREE REMOVAL



CANVAS HOPPER COVER

SEED RUNNER TANK



LARGE DOOR OPENINGS



WINDOWS AND LIGHTS FOR
DETERMINING FILL LEVEL



SPACIOUS CONTROL CONSOLE



ELECTRIC START ENGINE

- 500-seed-unit capacity with model 4955DXL; 400 with models 3955DXL and 3955XL; 375 with models 3755XL and 3755; 275 with models 2755XL and 2755
- Large tank opening for easier self-filling of seed.
- Dual compartments for delivering multiple varieties.
- Graphite-coated interior for fast, complete cleanout.
- Each compartment features dual viewing windows with upper LED indicator.
- light for easily determining fill level.
- Dual easy-opening 10" wide x 8" tall unloading doors for faster unloading with baffles to regulate seed flow.
- Control panel with choke, ignition and throttle controls mounted on conveyor side permits convenient engine operation.
- Trademarked ivory and tan speckle protective finishes with a powder-coated undercarriage and a two-part enamel topcoat on the tank with silicone-sealed seams for long life.



TURNTABLE FEATURES 3/4" INCREMENTS



DURABLE 18-OUNCE ROLLOVER TARP

- Standard snug-fitting 18-ounce rollover tarp to protect load contents; stays tightly locked, even at highway speed
- Conveyor turntable features stainless steel roller plates for long life and durability with catches in 3/4" increments for positioning the spout every 10"



SEED RUNNER UNDERCARRIAGE



OIL-BATH HUBS ON 4955DXL, 3955DXL AND 3955XL

- Undercarriage features rugged steel construction, allwheel electric brakes, highway-rated tires, LED lighting, reflective striping and transport chains
- Model 4955DXL features 16,000-pound tandem axles with duals, oil-bath hubs and a patented rubber-cushioned suspension with shock absorbers.
- Models 3955DXL and 3955XL feature 12,000-pound capacity tandem axles with single tires, oil-bath hubs and patented rubber-cushioned suspension and shock absorbers.
- Models 3755XL and 3755 offer triple 7,000-pound capacity axles with rubber-torsion suspension.



RUBBER-CUSHIONED SUSPENSION ON 4955DXL, 4955XL AND 3955XL

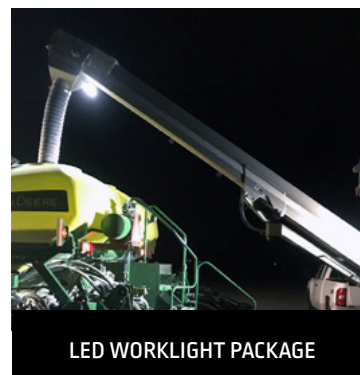
- Models 2755XL and 2755 offer dual 7,000-pound capacity axles with rubber-torsion suspension for a smoother ride.
- Standard 2 5/16" ball hitch; optional 3" pintle for bumperstyle hitch.
- Gooseneck hitch, standard on 4955DXL and optional on others, provides for greater hauling ease; features heavyduty drop-leg jack for parking and adjustable hitch height for optimum load leveling. A fifth-wheel conversion for pulling with semi tractor and rubber-cushioned hitch receiver are also available.
- All models can be mounted to your own truck or undercarriage.



SEED RUNNER ACCESSORIES



- LED worklight package with two tank-mounted and onespout mounted lights for convenient nighttime use.
- 20" wide ladder design with gas-strut lift-assist lowers and angles outward for easier viewing of load contents.
- Three-stage downspout reaches up to 47' on DXL models, 44' on XL models and 40' on all others
- Electric rollover tarp
- Aluminum wheels for a distinctive look on models 3755 and 2755.
- Larger 285/70 x 19.5 tires for models 3955DXL and 3955XL
- Tongue-mounted spare tire
- Electric-operated tank shaker kit to help free sticky seed from sides and reduce varietal contamination between loads.
- Hydraulically operated jack for bumper and gooseneck undercarriages for effortless raising and lowering.



LED WORKLIGHT PACKAGE



20" GAS-STRUT LIFT-ASSIST LADDER

SCALES

- Optional 2520 scale package can be factory- or fieldinstalled and provides weight information plus automatic conveyor shut-off for delivering precise quantities of seed.
- Features built-in calculator for determining weight per box needed.
- Tracks field information and even individual compartment unloading.
- Scale monitor is enclosed in a weather-tight box for verifying the quantity of seed delivered or for using as a weigh cart at harvest.
- Optional remote scale display features a 4" x 18" LED screen that can be mounted on the side of the tender for easy viewing.
- Scale platform is also available for installing scales when using the Seed Runner tender on your own truck or undercarriage.



OPTIONAL 2520 SCALE

T&G APPLICATOR FOR IDEAL LUBRICATION

- Patented design for constant application of talc, graphite or a mixture of both for ideal lubrication and more consistent seed placement.
- Automatically turns on and off in conjunction with conveyor.
- 50-pound capacity and a lower cleanout port.
- Weather-tight hopper lid keeps contents dry; gas-strut lift assist for easy opening and filling.
- Auger system and internal agitation provide even flow and virtually eliminate the possibility of material bridging.
- Features adjustable metering control from approximately 0.5 pounds per minute to 9.0 pounds per minute for delivering correct amount.
- Optional kit to allow easy application of synthetic fluency agents.



T&G APPLICATOR WITH COMPACT DESIGN

SEED RUNNER ACCESSORIES



WIRELESS REMOTE FOR EASY ONE-PERSON OPERATION

With the Unverferth Seed Runner tender's optional handheld wireless remote control, you can increase your filling speed and efficiently control operations up to 100' away.

- Heavy-duty weather and impact-resistant plastic can withstand the harshest conditions.
- Large labeled switches for easy reading and operation, even with work gloves.
- Magnetic attachment provides added storage convenience.
- Top-mounted emergency stop button for quickly shutting unit off.
- Manual override switch controls for easy operation in the event the remote is unavailable.

YOUR CHOICE OF THREE WIRELESS REMOTE CONTROL PACKAGES

- **3-function** — Conveyor on/off; conveyor raise/lower; open/close doors. Doors feature shut-off valve to ensure correct compartment is unloaded; standard on 4955DXL.
- **6-function** — Adds conveyor swing, engine start/stop engine throttle control and an LCD scale display.
- **7-function** — Adds conveyor rotation into self-filling and loading positions; is available for models with 8" and 10" conveyors, and also includes LCD scale display.



7-FUNCTION HANDHELD WIRELESS REMOTE



MANUAL OVERRIDE SWITCH CONTROLS



HYDRAULIC DOOR-OPENING CONTROLS

SEED RUNNER SPECIFICATIONS



| DESCRIPTION | | | 4955DXL | 3955DXL | 3955XL | 3755XL | 3755 | 2755XL | 2755 |
|-------------------------------------|---|-----------------|-------------|------------|------------|------------|------------|------------|------------|
| A | Overall Length | Bumper Hitch | — | 31' | 27'10" | 27'10" | 24'8" | 26'11" | 23'8" |
| | | Gooseneck Hitch | 32' | 31' | 27'10" | 27'10" | 25'9" | 26'11" | 24'8" |
| B | Overall Width Transport | | 8'6" | 8'6" | | 8'6" | | 8'6" | |
| C | Overall Height Transport | | 11'11" | 11'3" | | 10'8" | | 10'3" | |
| D | Overall Load Height | | 11' | 10'6" | | 10' | | 9'6" | |
| E | Box Length | | 16'8" | 14' | | 14' | | 12' | |
| F | Box Width | | 8'6" | 8'6" | | 8'6" | | 8' | |
| G | Box Height | | 9'6" | 9'1" | | 8'11" | | 8'5" | |
| H | Box Load Height | | 8'8" | 8'4" | | 8'2" | | 7'8" | |
| I | Box Base Length | | 11' | 9'5" | | 9'5" | | 9'5" | |
| J | Box Base Width | | 4'8" | 5' | | 5' | | 5' | |
| K | Undercarriage Length | | 27'5" | 22'3" | | 20'9" | | 20'9" | |
| L | Overall Length to the Hitch | | 28'8" | 24'3" | | 22'6" | | 22'6" | |
| M | Undercarriage Deck Height | | 2'4" | 2'3" | | 1'10" | | 1'10" | |
| N | Undercarriage Under Frame Clearance | | 1'1" | 1' | | 1'2" | | 1'2" | |
| O | Conveyor Height in Transport Position | | 8'2" | 8'9" | 7'10" | 7'10" | 7'6" | 7'10" | 7'6" |
| P | Conveyor Max Unload Height | | 15'11" | 15'7" | 13'6" | 13'6" | 12' | 13'6" | 12' |
| Q | Conveyor Reach at Maximum Unload Height | | 15'11" | 16'10" | 14'2" | 14'2" | 11'2" | 14'2" | 11'2" |
| R | Conveyor Minimum Unload Height | | 8'6" | 8'8" | 7'10" | 7'10" | 7' | 7'10" | 7' |
| S | Conveyor Reach at Minimum Unload Height | | 19'3" | 19'8" | 16'6" | 16'6" | 13'5" | 16'6" | 13'5" |
| Approximate Empty Weight | | | 11,000 lbs. | 7,300 lbs. | 7,150 lbs. | 6,820 lbs. | 6,750 lbs. | 6,040 lbs. | 6,000 lbs. |
| Loaded Tongue Weight | | | 6,700 lbs. | 1,000 lbs. | 1,000 lbs. | 1,000 lbs. | 1,000 lbs. | 1,000 lbs. | 1,000 lbs. |
| Lighting Connector | | | 7-Pin Flat | 7-Pin Flat | 7-Pin Flat | 7-Pin Flat | 7-Pin Flat | 7-Pin Flat | 7-Pin Flat |
| Overall Height — Less Undercarriage | | | 10'2" | 9'1" | 9'1" | 8'11" | 8'11" | 8'5" | 8'5" |

Due to continuing improvements in the design and manufacture of Unverferth products, all specifications contained herein are subject to change without notice. For relevant patent marking, please visit unverferth.com/patents.

SEED TENDER COMPARISONS

| FEATURE | MERIDIAN 4055 | UNVERFERTH 3755XL | J&M LC390 |
|----------------------|------------------|-------------------|-------------|
| Total Capacity/Units | 405 units | 375 units | 390 units |
| Unload Capacity | 2500lb units/min | 2100 lb/min | 1800 lb/min |
| Conveyor Length | 8 x 24' | 8 x 21' | 8 x 22' |
| Remote | 6 function | 6 function | 6 function |
| Scale | Scale | Scale | Scale |
| Max Unload | 14' 10" | 13' 6" | 16' 4" |
| Warranty | 2 years | 1 year | 1 year |

| FEATURE | J&M 535 | UNVERFERTH 4955DXL |
|----------------------|-------------|--------------------|
| Total Capacity/Units | 535 units | 500 units |
| Unload Capacity | 3500 lb/min | 3500 lb/min |
| Conveyor Length | 10 x 24.5' | 10 x 24.5' |
| Remote | 6 function | 6 function |
| Scale | Scale | Scale |
| Max Unload | 17' | 15' 11" |
| Warranty | 1 year | 1 year |

OPTIONS:

- Gooseneck
- Scale
- Talc
- Spout
- Hydraulic Jack
- Electric Tarp



MERIDIAN 4055



UNVERFERTH 3755XL



J&M LC390



UNVERFERTH 4955XL



J&M 535